

A - Housing flange to flange

B - Driver side housing flange to pinion center

C - Passenger side housing flange to pinion center

D - Axle flange to axle flange width

E - Axle flange (driver's side) to pinion center

F - Axle flange (passenger side) to pinion center

G - Axle flange to housing flange (brake stand-off)

H - Flange to bearing seat

I - Bearing journal diameter

J - Flange diameter

K - Brake drum register

L - Seal diameter (optional)

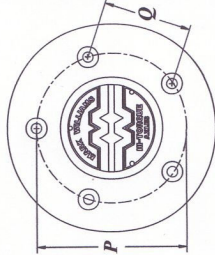
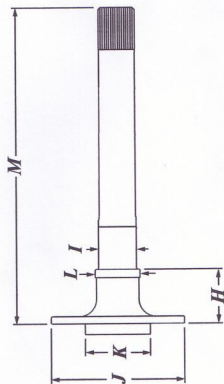
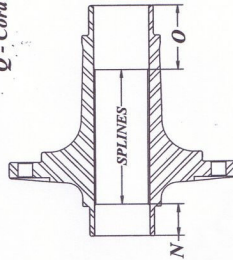
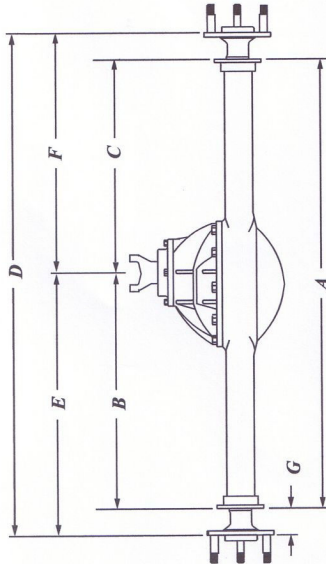
M - Overall axle length (right & left)

N - Driver side spline relief

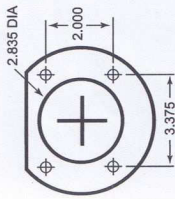
O - Passenger side spline relief

P - Bolt Circle

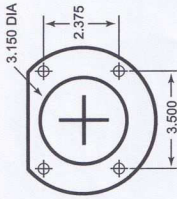
Q - Cord measurement between two studs



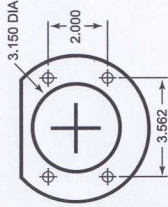
**formation. If this information is not provided your order cannot be processed.**



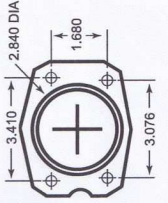
**Small Ford**



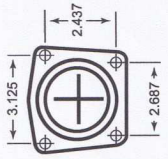
**Big Ford**



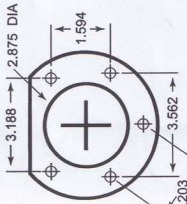
**Big Ford  
(new style)**



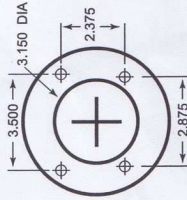
**8.8" Ford**



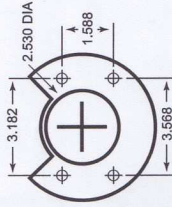
**10/12 Bolt Chevy  
(except Impala & Truck)**



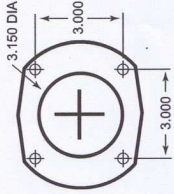
**8 3/4 Mopar  
Dana 60**



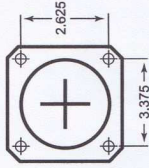
**Olds/Pontiac**



**8 1/4 & 9 1/4  
Mopar**



**Lamb /  
Symmetrical**



**Large GM  
(Impala & Truck)**